

MONTHLY MEMBERSHIP PROGRESS REPORT

District A 2

Results as of: 3/31/2026

GMT:

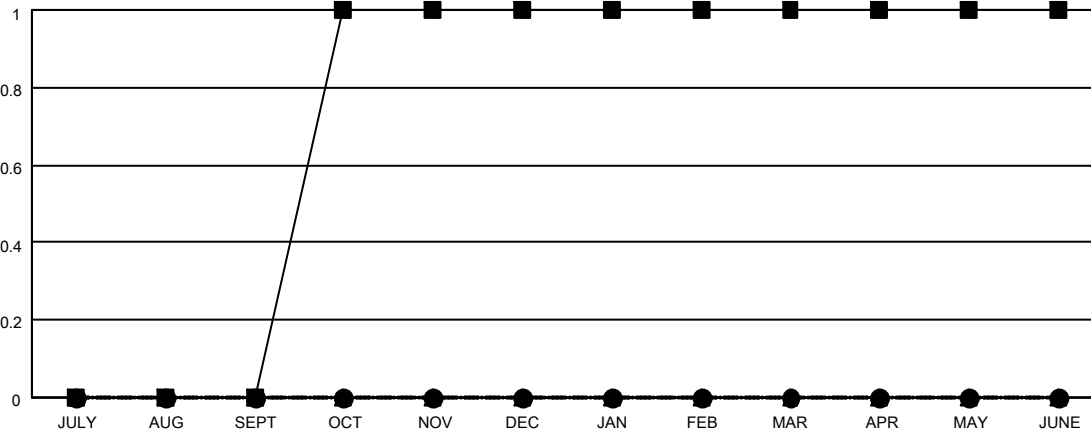
LOCATION ONTARIO

GMT CA

Clubs			
RESULTS FOR 2025-2026			
QUARTER	NEW CLUB GOAL	NEW CLUBS	DROPPED CLUBS
JULY/AUG/SEPT	0	0	0
OCT/NOV/DEC	1	0	0
JAN/FEB/MAR	0	0	0
APR/MAY/JUNE	0	0	0

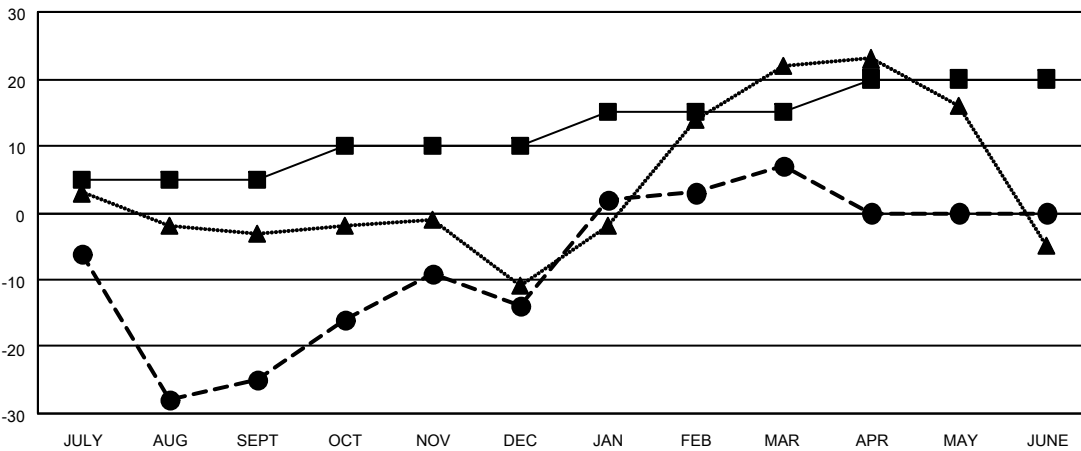
Members			
RESULTS FOR 2025-2026			
QUARTER	MEMBER GROWTH NET GOAL	MEMBER GROWTH ACTUAL	DROPPED MEMBERS ACTUAL (including transfers)
JULY/AUG/SEPT	5	32	41
OCT/NOV/DEC	5	53	36
JAN/FEB/MAR	5	61	33
APR/MAY/JUNE	5	0	0

GOALS AND ACTUAL NEW CLUBS CUMULATIVE



- - CURRENT YEAR GOALS FOR NEW CLUBS
- - CURRENT YEAR ACTUAL NEW CLUBS
- ▲ - LAST YEAR ACTUAL NEW CLUBS

GOALS AND ACTUAL MEMBERS CUMULATIVE



- - MEMBER GROWTH NET GOAL
- - MEMBER GROWTH ACTUAL
- ▲ - LAST YEAR MEMBERSHIP ACTUAL

DROPPED CLUBS: 0	33 CLUBS OF 43 ADDED 1 OR MORE NEW MEMBERS	GENDER DISTRIBUTION MALE 930 (68.94%) FEMALE 418 (30.99%)
DROPPED MEMBERS DECEASED 23 CLUB CANCELLED 0 OTHER 87 TOTAL 110	CLICK HERE FOR CUMULATIVE MEMBERSHIP DATA	TOTAL FAMILY UNIT MEMBERS 160 FAMILY MEMBERS PAYING HALF DUES 81